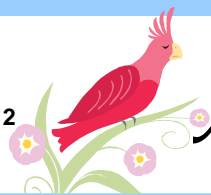


Summer 2011  
Volume XXXII, Issue 2



# Ameraucana Bulletin



Ameraucana Breeders Club, 1222 Coldspring Road, Elgin, IL 60120  
[www.ameraucana.org](http://www.ameraucana.org)

## President's Report, Connie "Jean" Ribbeck



It's almost summer and I am frantically trying to catch up on egg and chick orders. The long cold weather put a big damper on early hatchability. Many of my first batches of eggs didn't develop. It seemed like winter was never going to leave; less than three weeks ago we had snow.

Many people have already requested started birds from me and have been turned away. I plan to save most of my chicks to grow out as potential show prospects for Indianapolis. I may end up regretting that decision with the cost of feed this year.

I have made a couple new friends this year at the APA Semi-Annual Show in Stevenson, WA. I hope these contacts will be of great value to the Club when it comes time to discuss the lavender variety again with the APA. At this time I have considered only applying for recognition with the APA for the time being since both the large fowl and bantam varieties are recognized by their organization. This will be an issue that I will feedback and discussion on from the members and Directors in the future on the Forum.

If you would like to request a meet, don't forget to contact your District Director. Have a great summer.

## ABA Ads

It is hard to believe that it is ABA Yearbook Ad time again, but it is! If you would like to place an ad on the club page for the yearbook please send a check made out to the ABC. Checks will not be cashed until we have received 6 ads. We can have multiple pages of ads, but for the ABA we must have them in lots of six per page in order to have a full page. The ads are 2 inches by 2 inches. You may buy double ads, but the price also doubles! The cost of the ABA ad is \$20.00 for a 2" x 2".

Please send your ad electronically to Michael at [Michael@bantamhill.com](mailto:Michael@bantamhill.com) along with the check for the ad size and organization you are buying for by June 10, 2011. You can advertise for breeds besides Ameraucana in your ad.

## National Meet Award Donations

Jerry is currently finalizing the list of awards for the 2011 National Meet. If you are interested in donating toward a specific award please contact Jerry De Smidt. Donations can be sent directly to the Club Secretary. Watch the Forum and the next bulletin for full details.

### Connie "Jean" Ribbeck

President

### Michael J. Muenks

Secretary/Treasurer

### Jerry De Smidt

Director - North Central

### Harold Knapp

Director - Northeast

### Paul Smith

Director - South Central

### Tina Dinkins

Director - Southeast

### Jeanine McKee

Director - West

### Don Cable

Honorary Vice President

### Mike Gilbert

Honorary Vice President

### Susie Winder &

### John Blehm

ABC Forum Administrators



### Features this Issue:

Page 2 - District Reports

Page 5 - Club Meets

Page 9 - Meet Reports



## North Central District, Jerry De Smidt, Director

Greetings from the Midwest region! As I sit here writing this article our busy season in landscaping is upon us. The hatching is done as of the beginning of May; the hours at work are long. The weather has not been very nice. We have had a cold and wet spring, and the farmers are just now starting to get into their fields.

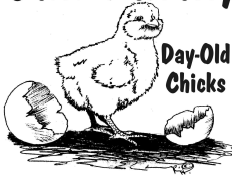
We did not hatch out as many chicks this year as last, but have some nice Ameraucanas in blue, black, buff, splash, and white. The older birds that were hatched in January are looking good and the youngest are too small to tell.

If anyone would like to have a meet placed please contact me at [jwoodhaven@aol.com](mailto:jwoodhaven@aol.com) or call me at 920-833-9772. Some of the shows that are coming up this summer and through the fall are:

Badgerland in Richland Center, WI  
The Wisconsin State Fair  
The Wisconsin International Poultry Club in Portage, WI  
The Ameraucana Nationals in Indy  
The Minnesota State Show  
The Eastern Iowa in Iowa City, IA

I hope all is well with everyone and hope to see you at some poultry shows this year. Jake and I are planning on going to the ABC nationals and would like to see everyone there.

## Chick Hatchery



I'm accepting orders for day-old chicks in 2012.

Don't be disappointed!  
Order now for limited hatches in March, April & May.

For an **Order Form** go to [ChickHatchery.com](http://ChickHatchery.com) or send a first class stamp to:

John W Blehm  
4599 Lange Road  
Birch Run MI 48415-8137

## Western District, Jeanine McKee, Director

Hello from the Western District!! We are FINALLY just starting to see some spring-like days here and I think the birds are as happy to see the sun as I am! There's lots of sun-basking and dust flinging going on here.

We had a great show here in April at the Pacific Northwest Poultry Association Northwest National. My son Garrett won Reserve AOCCL with a black bantam hen, which was his first time on Champion Row. VERY exciting!!

We've hatched a lot of black bantams, a couple of very nice blues, and FINALLY a splash pullet!! We went through 4 batches of shipped eggs last year trying to get a splash, and we finally got her. She's beautiful. I can't wait to see her babies.

Our large fowl are coming along nicely. We were lucky to be able to acquire two black hens from Wayne Meredith for the breeding pen this year, and will be using them with our lavender cock to get their size and egg color into our lavenders.

We've been busy hatching so we would have lots of babies to raise for the Western District meet this October at the Pacific Northwest Poultry Association show in Stevenson, Washington. I hope there will be a lot of fine competition!

Have a fantastic summer everyone!

## Southeast District, Tina Dinkins, Director

I started with an incubator full of eggs and lots of nice chicks. Then, I had poor luck as my chick house became flooded during some of the bad rains and I have lost almost all the chicks I raised since March. I would try, again but now the hens aren't laying. I have talked to several people in this district that are having a great spring and some nice hatches. I know some will be attending the National Meet, so there should be some nice birds for sale.

I have had a few calls for bantam wheaten and silver, but had to turn them down. I try to send them in the direction of some of you that may have some for sale. If you have plenty, please email me personally so I can send interested persons in your directions.

I will be attending the Tennessee Valley Fair in Knoxville, Tennessee and requesting a meet so if you live near please think of attending. Here is the email for more information:

[www.tnvalleyfair.org](http://www.tnvalleyfair.org) The date is September 9th thru the 18th. Hope to see you there!

## South Central District, Paul Smith, Director

Greeting from the South-Central District!

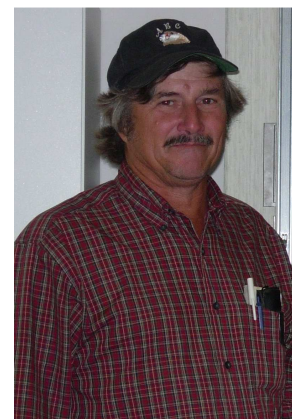
What more can I say about this hatching season other than-WOW! Sixteen years of hatching-four of EEL's before getting Ameraucanas, and this has to be the most challenging one ever experienced! February dumped record snow with temperatures plunging into the single digits. Several males had comb freeze damaged which caused sterility. Egg production was delayed and very low. The incubators were running only partially filled which resulted in only a few early hatched chicks. We had record orders for our day old chicks with only a few hatching in each incubator until March 21, when we started getting larger hatches and sending some out. I was getting concerned that this might be the first year that we couldn't fill all the orders! The two GQF and Styrofoam Huvabator incubators were running full capacity producing as many chicks as possible in an attempt to fill the orders. Egg production soared and we had enough eggs to fill another GQF, so we rented one from a friend who has several that he no longer uses.

Presently there are 541 (most ever here in one hatched) due to hatch on Monday, May 16, and 288 due to hatch Monday, May 30. Each hatch increased as we traded the older cocks out of the breeding pens, and replaced them with cockerels. Since we are not running a chicken sanctuary-there is going to be a lot of chicken noodle soup to eat in the near future. In Thessalonians 3:10 Paul writes: For even when we were with you, this we commanded you, that if any would not work, neither should he eat. My version pertaining to the chickens is "Any who don't work, deserve to be eaten."

We did manage to send a box of chicks to our fortieth state. It turned out to be our first time to have extra birds-two baby ducks mysteriously appear inside the shipping box while it was in transit! Adding a little more tension to this hatching season was an impossible customer. There is usually one every four or five years. Most are very pleased and glad to be able to get a good start of Ameraucanas by purchasing chicks, which is a very economical way of getting a start.

Presently we have sent out 463 chicks this season with two more hatches on their way. Hopefully we will be able to fill the remaining 415 head of chicks ordered. We have managed only to keep a few for showing and breeding, so I'm planning on one more late hatch to keep here. The June 3, 2010 late hatch rescued the spring hatch of 2011 by providing several good breeding cockerels to replace the old cocks.

Hope all has had a good hatching season and see you at the shows this fall.



## Larry Clionsky Ameraucana

**Black, Blue, Blue, Wheaten,  
Wheaten,  
White and Buff  
Large Fowl Ameraucana**

## Hatching Eggs and Day-Old Chicks

Larry Clionsky  
9 Zion Church Rd  
Grantville, PA 17028-9651  
(717)469-7509  
[Lclionsky@yahoo.com](mailto:Lclionsky@yahoo.com)

## Northeast District, Harold Knapp, Director



Greetings from the Northeast District!

We have had a cold wet spring. There were four nice days this week, and now rain for three days. Rain is forecast for most of this week. Farmers may have to raise bullfrogs and rice this year. Even with our weather this year, we have not had the flooding and tornados that other parts of the country have had. They need our prayers.

On the plus side, I have had people request some meets, which will increase interest in Ameraucanas.

I hope everyone has good hatches this spring. I am down to large blacks at this time. They started laying late this year and have not produced many eggs. I have got a few Ameraucana, white Dorking, and a couple dark brown leghorns so far. With feed prices the way they are, I am cutting down anyway. So this may be to the good.

## Treasurer's Report

<b>ABC Checking Account, Central Trust Bank, Jefferson City, MO</b>	
<b>Opening Balance January 1, 2011</b>	<b>\$ 2238.73</b>
Income – January Dues, Directories, Donations, etc	0
Income – February Dues, Directories, Donations, etc	585.00
Income – March Dues, Directories, Donations, etc	666.00
Income – April Dues, Directories, Donations, etc	292.50
<b>Income Subtotal (opening balance + months)</b>	<b>\$ 3782.23</b>
Expense - Postage	247.41
Expense – Office Supplies	327.33
Expense – Other: Memorials	
Expense – Memberships, Advertisements	
Expense – Bank Charges (return item fees)	
Expense – National Meet Awards/Awards	
Expense - Refunds	
<b>Expense Subtotal</b>	<b>\$ 574.74</b>
<b>Ending Balance as of January 31, 2011</b>	<b>\$ 3207.49</b>
<b>PayPal Account May 21, 2011 balance</b>	<b>\$ 1708.25</b>
PayPal Purchases (toner, Exhibition Poultry Ad)	197.85
<b>Total</b>	<b>\$ 4915.74</b>

Respectfully Submitted, Michael J. Muenks, Secretary/Treasurer



Fayetteville, AR

Large Fowl Black, Blue,  
Splash & Mottled

Ameraucana

HATCHING EGGS

Focusing on egg  
qualities

& foraging capabilities,  
Award winning chicks

[rose@masoncreekfarm.com](mailto:rose@masoncreekfarm.com)



A breeding pen of Wheaten bantams

## Upcoming Ameraucana Breeders Club Meets

### June 4, 2011

Special Meet, requested by Mike Gilbert  
Badger Poultry Show, Richland Center, WI  
Contact:  
Ruth Lefeber, [dottestuff@yahoo.com](mailto:dottestuff@yahoo.com), (608)725-2179  
8648 Irish Ridge Road  
Cassville, WI 53806

### June 11, 2011

Special Meet, requested by Patty Pickard  
Buckeye Fancy Feathers, Canfield, OH  
Contact:  
Rhonda Simmons, [rjos@comcast.net](mailto:rjos@comcast.net), (330)426-6870

### September 10-11, 2011

**Illinois State Meet**, requested by Jerry DeSmidt  
Illini Poultry Club Boone County Fairgrounds, Belevidere, IL  
Contact:  
Ruth Ann Van Fleet, [bpopla@comcast.net](mailto:bpopla@comcast.net), (815)765-2952

### September 24-25, 2011

**North Central District Meet**, placed by Jerry DeSmidt  
Wisconsin International, Portage, WI  
Contact:  
Tara Kindschi  
E 7014 Co Hwy P.F.  
Loganville, Wisconsin  
1608-727-2720  
[ridge@merr.com](mailto:ridge@merr.com)

### October 1, 2011

Special Meet, placed by Jerry De Smidt  
West Central Wis. Pigeon & Poultry Club "Red Cedar Showdown",  
Menomonie, WI  
Contact:  
Dan Paff, [judan@wwt.net](mailto:judan@wwt.net), (715)723-2750  
6977 County Hwy N  
Chippewa Falls, WI 54729

### October 8-9, 2011

**Michigan State Meet**, placed by Jerry DeSmidt  
Michigan Poultry Fanciers – Frankenmuth Fowl Fest, Frankenmuth, MI  
Contact:  
Matt Boensch, [entries@fowlfest.org](mailto:entries@fowlfest.org)  
Michigan Poultry Fanciers  
9577 W. Saginaw Rd.  
Reese, MI 48757

### October 15, 2011

Special Meet, placed by Jerry DeSmidt  
Central Indiana Poultry Show, Lebanon, IN  
Contact:  
Doug Akers, [dakers@purdue.edu](mailto:dakers@purdue.edu) (765)482-7182  
Ron Patterson, [rpatter815@earthlink.net](mailto:rpatter815@earthlink.net) (765)676-6192  
<http://www.poultryshow.org>

### October 15-16, 2011

**Western District Meet**, placed by Jeanine McKee  
Pacific Northwest Poultry Association Northwest Winter Classic, Skamania  
County Fairgrounds, Stevenson, WA  
Contact:  
[barbtuss@gmail.com](mailto:barbtuss@gmail.com)

### October 16, 2011

**New York State Meet**, requested by Susan Osio  
The Yankee Fall Classic, New York State Fairgrounds, Syracuse, NY  
Contact:  
John Pierce  
3832 Makyas Road  
Syracuse, NY 13215

### October 28-30, 2011

**National Meet**, placed by ABC Board of Directors  
Crossroads of America Show, Indianapolis, IN  
Contact:  
[http://web.mac.com/rbennett57/Crossroads\\_of\\_America/Crossroads\\_of\\_America.html](http://web.mac.com/rbennett57/Crossroads_of_America/Crossroads_of_America.html)

### November 5-6, 2011

**Nebraska State Meet**, placed by Jerry De Smidt  
Nebraska State Poultry Show Double Poultry Show, Lincoln, NE  
Contact:  
Bernita Miller, [bmiller@iland.net](mailto:bmiller@iland.net)

### November 5-6, 2011

**Maryland State Meet**, requested by William Morrow  
Maryland State Poultry Fancier's Association, Frederick, MD  
Contact:  
Kay St. Amour, [cochinlady@verizon.net](mailto:cochinlady@verizon.net)

### November 12-13, 2011

Special Meet, requested by Patty Pickard  
Ohio National  
Columbus, OH  
Contact:  
Eric Markley, 419-568-7402, Cell 419-303-6909, [markley@ohionational.org](mailto:markley@ohionational.org)  
[www.ohionational.org](http://www.ohionational.org)

### December 10, 2011

**North Carolina State Meet**, requested by Beth Curran  
Cape Fear Poultry Association, Johnston County Livestock Arena,  
Smithfield, NC  
Contact:  
Carolyn Lynn, 910-897-8001, [sultanlady@embarqmail.com](mailto:sultanlady@embarqmail.com)  
Arkleton 5860 Hwy 217  
Erwin, NC 28339  
<http://www.capefearpoultryassociation.embarqspace.com/#/club-news/4536163105>

### January 7, 2012

**Texas State Meet**, requested by Aaron Hickson  
Bluebonnet Classic, College Station, TX  
Contact:  
Claudia Choate, 512-273-2010  
1489 CR 308  
Lexington, TX 78947-4190  
[claudia@bluebonnetclassic.com](mailto:claudia@bluebonnetclassic.com)

**Club Notes**

The deadline to submit articles, ads, reports, meet requests, etc. for the next bulletin is August 15, 2011 and need to be sent to the club secretary.

Bulletin advertisements are free to all members!

**We now take PayPal!**  
To send payments use [purchases@ameraucana.org](mailto:purchases@ameraucana.org)

**Club Merchandise**

1982 Club Handbook - \$5

2005 Club Handbook - \$5

ABC 4" Patch 1 for \$3 or 2 for \$5.50.



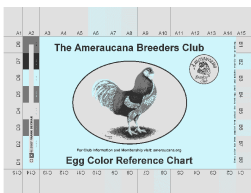
Bulletins 1979-1984 - \$30

Bulletins 1985-1993 - \$35

Breeders Directory - \$2

**Egg Shell Reference Chart**

1 for \$3 or 2 for \$5



Make Checks Payable to the Ameraucana Breeders Club and send to the club secretary.

**Blast from the Past: Egg Color and Breed Development,**  
Michael Gilbert, January 2001

*Based on some of the topics on the ABC Forum lately, I selected some words of wisdom from the spring 2001 bulletin to share.*

Early in the development of the Ameraucana breed standard, certain old-timers such as the late Frank Gary (who was then chairman of the American Bantam Association standards committee), graciously passed on a few "pearls of wisdom" with regard to breed characteristics. One such bit of advice was to have the standard allow for at least some white in the earlobes. At the time mixed ear lobe color seemed a sure sign of impurity, and since we were desirous of escaping the mongrel designation then prevalent for "Araucana," the idea was respectfully dismissed. As the adage goes, "Fools rush in . . ."

Close to a quarter-century later we have a greater appreciation for Mr. Gary's words, even though we are still not in complete agreement with them. Why? It now seems clear that Mr. Gary, having bred color egg large "Araucana" during the 1930's and 1940's could foresee potential problems in maintaining excellent blue eggshell color if brown-egg chickens were crossed in to develop recognized plumage patterns. Because brown egg chickens mostly have red earlobes, they were primarily used in forming the breed, and are still used in isolated cases today. The result has been to develop several lines of beautifully colored Ameraucanas that lay green eggs. While not suggesting anyone abandon a strain of birds because of egg color, we do need to move towards the improvement of egg color over time. Blue is correct, green is not.

The reader needs to understand that the genetics for blue shells are inherited independently from the genetics for brown eggs; they are not mutually exclusive. When brown pigment mixes with blue, the result is green. When a bird inherits both blue and brown eggshell genetics, it lays green eggs. The specific shade of green will vary depending upon the relative strength of the two sets of genes and other modifying factors.

White eggshells, on the other hand, result from genetics that prevent brown pigment from developing in and on the eggshell. White is essentially a non-color, hence a chicken with genetics for white and blue shells will lay blue eggs. This is proper for the Ameraucana breed, and seems to lead to the conclusion that white egg chickens instead of brown egg chickens should have been used to develop desired plumage colors.

Most white egg breeds are of Mediterranean origin and have white earlobes. The latter trait is a show disqualification for Ameraucanas. Are we left with a "Catch 22" situation? Not really, but this does present an additional degree of breeding difficulty.

It is possible to breed white out of the earlobes in a strain of birds while maintaining the proper blue eggshell color. To do so simply requires raising more birds because culling for the improper trait(s) will necessarily be more severe. It can be and has been done.

Another approach would be to select (for crossbreeding) one of the few breeds that actually do have red earlobes and lay either white or very slightly tinted eggs. The Crevecoeur (black) and the Lamona (white) breeds are two examples and there are others.

Perhaps there are a few Araucana strains that lay good blue eggs as well.

## Blast from the Past, Continued . . .

There exists other means of improving egg color as well, not the least of which is selection over time. If certain individuals in a flock lay a bluer egg than others, those individuals and their male offspring should be the only ones used for breeding. If certain male birds throw female progeny that produce better-than-average colored eggs they should be bred back to their daughters, other factors being equal. Caution must be exercised to prevent too close inbreeding, as lower production and fertility would result.

A final possibility, and at this stage of the game perhaps the most satisfactory, would be to seek out another strain of the same Ameraucana variety that does in fact lay excellent blue eggs. If the green egg strain is superior to the blue egg strain in certain other respects, the two lines could be crossed. If enough offspring are raised and culling is properly done, the best attributes of both strains should be combined in one new superior strain within merely a few generations. If the same variety is not available, another variety could be used.

White, for example, could be improved by crossing to black, preferably a black male with a little silver in the hackle. This cross will take only two generations to get back to 100 percent white offspring.

Breeding for improvement is seldom quick and easy, but difficulty only makes eventual success all the sweeter. As Winston Churchill, the prime minister of England during World War II, once said, "A kite rises highest against the wind." Good Luck!

## From Under the Black Locust, Michael Muenks

A virtual riot of plant growth has erupted in the last three weeks here in Elgin, IL. The cold weather has finally broken and with it came the promised May flowers. It was really interesting heading back to Missouri for Easter. One could really see the progress of spring on the trip. The reality of there the month's difference in the season was stunning. Central Missouri was in almost full leaf and the Black Locust were about a week away from blooming at Easter.

We are seeing the first Canada Goose goslings. It will be fun to see the Mallard ducklings in a few weeks. Our townhouse is located on the edge of a wetland preserve. A lot of duck and goose activity! We have enjoyed the many types of ducks that stopped by on their trip north to their breeding grounds. Quite fun! From Missouri, we hear that one pea hen is brooding a nest of six eggs and there is one bantam hen brooding a nest of mixed Ameraucana eggs. When we moved last fall from the farm, I was unable to capture all of the chickens and none of the peafowl. I think our renters are beginning to enjoy them.

Paul Smith, in his report for this bulletin, mentions the quality of and the helpfulness of a late hatch last year. I wish to expand a bit on the idea of late hatches, especially in this age of increasing feed prices. Over the years, several of the older poultry books I have read have suggested the benefits of using late hatch chickens as the foundation for the next year's breeding stock. The reasons given were:

- Quick growth during warm weather,
- Varied diet,
- Ability to hatch eggs from hens that have been exceptional layers, and
- Winter months are spent growing.

## Pips & Peeps

Large Fowl Ameraucanas  
Black, Blue, Blue Wheaten,  
Buff, Lavender, Silver,  
Splash, Wheaten & White  
Chicks available April thru  
September.

Hatching eggs available year  
round  
and started birds in the Fall.  
NPIP



Jean Ribbeck  
PO Box 461

Newman Lake, WA 99025  
509-226-3833  
[jribbeck@q.com](mailto:jribbeck@q.com)  
[pipsandpeeps.com](http://pipsandpeeps.com)



# Faith Valley Waterfowl

We have 15+ 2011 hatch wheaten bantam pairs that we will be selling this summer/fall. If anyone is interested

Please can contact  
**Patty Pickard**  
at 330-465-1097  
or email at  
[faithvalleywaterfowl@yahoo.com](mailto:faithvalleywaterfowl@yahoo.com)



A breeding pen of White bantams



A breeding pen of Blue Wheaten bantams

## From Under the Black Locust, Continued . . .

I have found this strategy to work well. In general, my pullets, regardless of age and day length, never laid much before February and the late hatch pullets always started at the same time as the rest of the pullets. The other advantage I found was that I could focus more time on training birds for the fall show season.

If you would like your quarterly bulletin delivered to you as a PDF file via email, please let me know.

I am looking forward to my first poultry show visit for the year on June 4<sup>th</sup> at the Badger Poultry Show in Richland Center, Wisconsin. The next bulletin will have some pictures!

## New Meet Placement Procedure, Michael Muenks

As of January 1, 2011 the Ameraucana Breeders Club has modified the way state and special meets are to be placed. State and special meet requests by members should be sent directly to the District Director who will place the meet. If a meet is outside your District, members should make the meet request to the Director within whose District the meet will take place. Members should supply the following information, if at all possible, when requesting an Ameraucana Breeders Club meet to be placed at a show:

- Official name of the show
- Date(s) of the show
- Actual location of the show
- Show Superintendent 's and/or Show Secretary's name and contact information

Please send your requests for meets as early as possible because there is paperwork that has to be completed in order for a meet to be placed. Show Catalogs are normally printed and mailed several months in advance of the show. Please submit your requests early. **Meet requests for shows September 1, 2011 – March 31, 2012, should be in to Director's by August 15, 2011 if at all possible.**

District meet placement is the prerogative of the District Director.

I have many requests from show clubs for meets that are posted on the Club forum. I encourage members to request meets and spread the word about the meet, if you don't request the meet, who will?



Buff large fowl Hen



Blue large fowl Hen



## Meet Reports

### **Badger Poultry Club Show, Richland Center, WI**

Special Meet, June 5, 2010, Reported by Ruth Lefeber

7 bantams were shown and judged by Don Karasek  
 BB, BV blue H by Michael Gilbert, **Champion Ameraucana**  
 BV blue wheaten H by Michael Gilbert  
 BV brown red H by Michael Gilbert  
 RV brown red C by Michael Gilbert  
 BV white P by Randal Buske, out of 3  
 RV white C by Dan Nollenberg

2 large fowl were shown in the Junior Show and judged by Don Karasek

BB, BV black P by Joshua Flees  
 RB, BV white H by Amber Flees

2 bantam were shown in the Junior Show and judged by Don Karasek

RB, BV black H by Vanessa Beach  
 BB, BV wheaten H by Jacob Sonsalla

### **Spokane County Interstate Fair, Spokane, WA**

Special Meet, September 15-17, 2010, Reported by Tony Albritton

23 large fowl were shown and judged by Jim Crair  
 RB, BV black P by Gina Crosby, out of 13, **Reserve Champion Ameraucana**

RV black P by Gina Crosby  
 BV blue wheaten C by Connie Jean Ribbeck  
 BV buff K by Connie Jean Ribbeck  
 BV silver H by Linda Garrett  
 BV wheaten – 2 DQ  
 BB, BV white C by Connie Jean Ribbeck, **Champion Ameraucana**  
 BV AOV – splash K by Connie Jean Ribbeck  
 BV AOV – lavender P by Gina Crosby

### **Wisconsin International Show, Portage, WI**

Wisconsin State Meet, September 25-26, 2010 Reported by Elizabeth Breuer

6 large fowl were shown and judged by Gary Overton  
 BB, BV black P by Jeffrey Stevens, out of 5  
 RB, RV black P by Jeffrey Stevens  
 BV wheaten P by Brianna Wilcox

16 bantams were shown and judged by Larry Denny

BV black P by Robert Walchak, out of 3  
 RV black K by Robert Walchak  
 BV blue C by Michael Gilbert  
 RV blue P by Michael Gilbert  
 BV blue wheaten P by Robert Walchak  
 RV blue wheaten P by Michael Gilbert  
 BV brown red K by Robert Walchak  
 RV brown red P by Robert Walchak  
 BV wheaten K by Robert Walchak, out of 5  
 RV wheaten P by Robert Walchak  
 BB, BV white K by Robert Walchak, **Champion Ameraucana**  
 RB, RV white P by Robert Walchak, **Reserve Champion Ameraucana**

3 large fowl were shown in the Junior Show and judged by Larry Denny

BV black P by Joshua Flees, out of 3, **Junior Show Champion Ameraucana, Reserve Champion AOSB**  
 RV black K by Joshua Flees

1 bantam was shown in the Junior Show and judged by Larry Denny

BV blue H by Vaness Beach

### **West Central Wis. Pigeon & Poultry Club “Red Cedar Showdown”, Menomonie, WI**

Special Meet, October 2, 2010 Reported by Dan Paff

10 large fowl were shown and judged by Don Karasek

RB, BV black K by Jeff Sonsall, out of 4  
 RV black P by Jeff Sonsall  
 BV blue wheaten P by Stallman’s Poultry in the Pines  
 RV blue wheaten K by Stallman’s Poultry in the Pines  
 BV brown red K by Michael Gilbert  
 RV brown red P by Michael Gilbert  
 BB, BV wheaten K by Stallman’s Poultry in the Pines, **Reserve Champion Ameraucana**  
 RV wheaten P by Stallman’s Poultry in the Pines

17 bantams were shown and judged by Don Karasek

BV black P by Robert Walchak  
 RV black K by Robert Walchak  
 BV blue wheaten P by Michael Gilbert  
 RV blue wheaten P by Robert Walchak  
 BV brown red K by Robert Walchak  
 RV brown red P by Robert Walchak  
 BB, BV wheaten K by Robert Walchak, out of 9, **Champion Ameraucana**  
 RV wheaten P by Michael Gilbert

RB, BV white P by Robert Walchak  
RV white K by Robert Walchak

5 large fowl were shown in the Junior Show and judged by Don Karasek

BV black P by Joshua Flees, out of 3, **Junior Show Champion Ameraucana**  
RV black K by Joshua Flees  
BV blue wheaten P by Riley Barnhardt  
BV silver P by Riley Barnhardt

4 bantam were shown in the Junior Show and judged by Don Karasek

BV black K by Andrew Schoen  
BV brown red K by Andrew Schoen  
RV brown red P by Anna Schoen  
BV wheaten H by Natalie Sonsalla

**Montana Poultry Fanciers Fall Exposition, MT– Show #1**  
Special Meet, October 2, 2010, reported by Erin Faulkner

13 large fowl were shown by 6 exhibitors, Judged by Scott Adams

BV black P by Jean Ribbeck  
Disqualified blue  
BV buff K by Jean Ribbeck, out of 3 (2 disqualified)  
BV silver P by Jean Ribbeck, out of 3  
RV silver P by Shawna Ostema  
BB, BV wheaten C by Jean Ribbeck, **Champion Ameraucana**  
RB, BV white C by Jean Ribbeck, **Reserve Champion Ameraucana**  
RV white P by Jean Ribbeck  
BV AOV lavender P by Grace Ribbeck

14 bantams were shown by 3 exhibitors, Judged by Scott Adams

RB, BV blue wheaten H by Nadine Wizniewski, out of 11  
RV blue wheaten K by Nadine Wizniewski  
BB, BV wheaten H by Nadine Wizniewski, out of 3  
RV wheaten K by Nadine Wizniewski

3 large fowl was shown by 2 Junior exhibitors, Judged by Scott Adams

Disqualified blue  
Disqualified silver  
BV AOV lavender P by Grace Ribbeck, **Junior Show Champion Ameraucana**

1 bantam were shown by 1 Junior exhibitor, Judged by Scott Adams

BV blue wheaten H by Kyle Patten

**Montana Poultry Fanciers Fall Exposition, MT– Show #2**  
Special Meet, October 2, 2010, reported by Erin Faulkner

13 large fowl were shown by 6 exhibitors, Judged by Marilyn Novak

BV black P by Jean Ribbeck  
BV blue P by Zoe Fisher  
RB, BV buff K by Jean Ribbeck, out of 3  
RV buff P by Karen Beatty  
BV silver P by Jean Ribbeck, out of 3  
RV silver P by Shawna Ostema  
BV wheaten C by Jean Ribbeck  
BB, BV white P by Jean Ribbeck, out of 3, **Reserve Champion Ameraucana**  
RV white C by Jean Ribbeck  
BV AOV lavender P by Grace Ribbeck

14 bantams were shown by 3 exhibitors, Judged by Marilyn Novak

BB, BV blue wheaten H by Nadine Wizniewski, out of 11, **Champion Ameraucana**  
RB, RV blue wheaten H by Nadine Wizniewski  
BV wheaten H by Nadine Wizniewski, out of 3  
RV wheaten K by Nadine Wizniewski

3 large fowl was shown by 2 Junior exhibitors, Judged by Marilyn Novak

BV blue P by Zoe Fisher, out of 1, **Junior Show Champion Ameraucana**  
BV AOV lavender P by Grace Ribbeck

1 bantam were shown by 1 Junior exhibitor, Judged by Marilyn Novak

BV blue wheaten H by Kyle Patten, out of 1

**Frankenmuth Fowl Fest, Frankenmuth, MI**

North Central District Meet, October 9-10, 2010, reported by Matt Boensch

9 large fowl were shown by 4 exhibitors, Judged by Gary Overton

BB, BV black K by Rick Straight, out of 4  
RB, RV black P by Rick Straight  
BV blue wheaten H by Candy and Erika Prince  
BV brown red P by Michael Gilbert, out of 2  
RV brown red K by Michael Gilbert  
BV AOV lavender P by John Blehm, out of 2  
RV AOV lavender K by John Blehm

13 bantams were shown by 5 exhibitors, Judged by Gary Overton

BV black H by Candy and Erika Prince, out of 2  
RV black P by Kayle Church  
BB, BV blue wheaten P by Michael Gilbert, out of 1,  
**Champion Ameraucana**  
BV buff P by David Blehm, out of 2  
RV buff K by David Blehm  
BV silver P by David Blehm, out of 2  
RV silver K by David Blehm  
RB, BV wheaten P by Michael Gilbert, out of 3, **Reserve Champion Ameraucana**  
RV wheaten K by David Blehm  
BV white K by Kayle Church, out of 1  
BV AOV lavender P by David Blehm, out of 2  
RV AOV lavender K by David Blehm

10 Ameraucana were shown by 5 Junior exhibitors, Judged by Gary Overton

BV black P by Kayle Church  
BV buff P by David Blehm, out of 2, **Junior Show Champion Ameraucana**  
RV buff K by David Blehm  
BV silver P by David Blehm, out of 2  
RV silver K by David Blehm  
BV wheaten K by David Blehm, out of 2  
RV wheaten P by David Blehm  
BV white K by Kayle Church, out of 1  
BV AOV lavender P by David Blehm, out of 2  
RV AOV lavender K by David Blehm

**Missouri State Poultry Association Fall Double Show, Sedalia, MO, Meet 1**

Missouri State Meet, October 16, 2010, Reported by Bernita Miller

3 large fowl were shown and judged by Larry Denny

BV silver H by Rachel Easter  
RB, BV wheaten P by Bailey Crouch  
BB, BV AOV Red H by Angela Easter, **Reserve Champion Ameraucana**

6 bantams were shown and judged by Larry Denny

BB, BV blue wheaten C by Woody Springer, **Champion Ameraucana**  
RV blue wheaten C by Woody Springer  
RB, BV wheaten H by Woody Springer  
RV wheaten H by Woody Springer  
BV white P by Linda Carver  
RV white K by Linda Carver

**Missouri State Poultry Association Fall Double Show, Sedalia, MO, Meet 2**

Special Meet, October 16, 2010, Reported by Bernita Miller

3 large fowl were shown and judged by Troy Jones

RB, BV silver H by Rachel Easter  
BV wheaten P by Bailey Crouch  
BB, BV AOV Red H by Angela Easter, **Reserve Champion Ameraucana**

6 bantams were shown and judged by Troy Jones

BB, BV blue wheaten C by Woody Springer, **Champion Ameraucana**  
RB, RV blue wheaten C by Woody Springer  
BV wheaten H by Woody Springer  
RV wheaten H by Woody Springer  
BV white P by Linda Carver  
RV white K by Linda Carver

**Pacific Northwest Poultry Association Northwest Winter Classic, Stevenson, WA**

Western District Meet, October 16-17, 2010, reported by Pam Lyng

9 large fowl were shown by 1 exhibitor, Judged by Lewis Cunningham

BV black P by Jean Ribbeck, out of 1  
BV buff K by Jean Ribbeck, out of 2  
RV buff P by Jean Ribbeck  
BV silver P by Jean Ribbeck, out of 1  
BV white C by Jean Ribbeck, out of 3  
RV white K by Jean Ribbeck  
BV AOV P by Jean Ribbeck, out of 2  
RV AOV K by Jean Ribbeck

9 bantams were shown by 2 exhibitors, Judged by Conner Keegan

RB, BV black H by Jeanine McKee, out of 5  
RV black C by Jeanine McKee  
BB, BV wheaten P by Larry Giberson, out of 4, **Reserve Champion Ameraucana**  
RV wheaten P by Larry Giverson

1 large fowl was shown by 1 Junior exhibitor, Judged by Larry Urban

BV wheaten P by Tandie Decker, out of 1

7 bantams were shown by 3(?) Junior exhibitors, Judged by Larry Urban

BV black H by Sarah Summerhill, out of 4, **Junior Show Champion Ameraucana**

RV black P by Rob Smith  
BV wheaten H by Sam Meisenhelder, out of 3  
RV wheaten K by Sam Meisenhelder

**Washington Feather Fanciers Winter Brisk Show,  
Chehalis, WA**

Special Meet, December 4-5, 2010, reported by Pam Lyng

6 large fowl were shown by 1 exhibitor. Judged by Jamie Matts

BB, BV blue wheaten P by Royce Van Blaricome, out of 3  
RV blue wheaten by Royce Van Blaricome  
RB, BV wheaten P by Royce Van Blaricome, out of 3  
RV wheaten by Royce Van Blaricome

14 bantams were shown by 5 exhibitors, Judged by Ken  
Cooke

BB, BV black C by Jeanine McKee, out of 5  
RB, RV black H by Sara Summerhill  
BV wheaten K by Sam Meisenhelder, out of 7  
RV wheaten H by Sam Meisenhelder  
BV AOV lavender by Jeanine McKee, out of 2  
RV AOV lavender by Jeanine McKee

**Northeastern Poultry Congress, West Springfield, MA**

Northeastern District Meet, January 15-16, 2011, Reported by  
Janet Winnett

17 large fowl were shown and judged by Tracy Hill

BV black k by Harold Knapp, out of 5  
RV black K by Harold Knapp  
BB, BV blue C by Doug and Cindy Dillingham  
RV blue H by Doug and Cindy Dillingham  
RB, BV blue wheaten H by Ann Horseman, out of 3  
RV blue wheaten H by Doug and Cindy Dillingham  
BV buff C by Doug and Cindy Dillingham  
RV buff H by Doug and Cindy Dillingham  
BV silver K by Harold Knapp, out of 3  
RV silver C by Harold Knapp  
BV wheaten K by Ann Horseman  
RV wheaten P by Ann Horseman

1 bantam was shown

BV white P by Linda Blackman

3 large fowl were shown in the Junior Show and judged by  
Lewis Cunningham

BV black P by Hugh and Abi Cipparone, **Junior Show  
Champion Ameraucana, Junior Show Reserve AOSB**  
BV blue P by?  
BV white H by Thomas Williams

1 bantam was shown in the Junior Show and judged by Lewis  
Cunningham

BV wheaten H by Ross Beed

**Humboldt Poultry Fanciers, Eureka, CA**

Special Meet, February 12, 2011, Reported by Harry Majors

12 large fowl were shown and judged by Paul Wieser

BB, BV black H by Seamus Begley, out of 9, **Champion  
Ameraucana**  
RB, RV black P by Seamus Begley  
BV blue P by Seamus Begley  
RV blue C by Seamus Begley  
BV blue wheaten C by Clara Carstrnsen

3 bantams were shown and judged by Eric Kutch

BB, BV black P by Todd Bauer, **Reserve Champion  
Ameraucana**  
RB, RV black P by Todd Bauer  
BV wheaten H by Carina Salcedo

12 large fowl were shown in the Junior Show and judged by  
Wieser

BB, BV black H by Seamus Begley, out of 9, **Junior Show  
Champion Ameraucana**  
RB, RV black P by Seamus Begley  
BV blue P by Seamus Begley  
RV blue C by Seamus Begley  
BV blue wheaten C by Clara Carstrnsen

3 bantams was shown in the Junior Show and judged by Paul  
Wieser

BB, BV black P by Todd Bauer  
RB, RV black P by Todd Bauer  
BV wheaten H by Carina Salcedo

**Washington Feather Fanciers Cascade Spring Poultry  
Show**

Special Meet, March 19, 2011, Reported by Pam Lyng

18 large fowl were shown and judged by Paul Wieser

BB, BV black H by Connie Jean Ribbeck, **Champion  
Ameraucana**  
RB, BV blue wheaten K by Royce Van Blaricome, out of 6,  
**Reserve Champion Ameraucana**  
RV blue wheaten H by Royce Van Blaricome  
BV buff K by Connie Jean Ribbeck  
BV silver H by Nicolas Johnson  
BV wheaten C by Royce Van Blaricome, out of 8  
RV wheaten H by Royce Van Blaricome  
BV white C by Nicolas Johnson

6 bantams were shown and judged by Brian Decker

BB, BV black H by Garrett McKee, out of 6

RB, BV black K by Connie Jean Ribbeck

**Southeast Ohio Poultry Breeders Association Show, Marietta, OH**

Special Meet, March 26, 2011, Reported by Patty Pickard

4 bantams were shown

BB, BV black C by Caleb Pickard

BV wheaten P by Caleb Pickard

RB, BV white C by Patty Pickard

3 bantams were shown in the Junior Show

RB, BV black C by Caleb Pickard

BV buff C by Nicole Pickard

BB, BV wheaten P by Caleb Pickard, **Reserve Champion AOCCL**

**Gateway Poultry Show, IN**

Indiana State Meet, April 9, 2011, Reported by Phyllis

Saucerman

4 bantams were shown and judged by Bill Ziehm

BB, BV black H by Megan Mayall, **Champion Ameraucana**

BV blue H by Megan Mayall

RB, BV white H by Megan Mayall, **Reserve Champion Ameraucana**

BV AOV splash H by Megan Mayall



Buff Large Fowl Hen



Wheaten Bantam Hen

1 large fowl was shown in the Junior Show and judged by Matt McCammon

BB, BV white H by Toni Opyt, **Junior Show Champion Ameraucana, Junior Show Reserve Champion AOSB**

**Pacific Northwest Poultry Association, Stevenson, WA**

Special Meet, April 16-17, 2011, Reported by Jean Ribbeck

6 large fowl were shown and judged by Jamie Carson

BB, BV black H by Connie Jean Ribbeck, **Champion Ameraucana**

RV black H by Connie Jean Ribbeck

BV blue K by Connie Jean Ribbeck

BV buff K by Connie Jean Ribbeck

BV wheaten H by Connie Jean Ribbeck

RB, BV white H by Connie Jean Ribbeck, **Reserve Champion Ameraucana**

4 bantams were shown and judged by Jamie Carson

BB, BV black K by Jeanine McKee

RV black K by Jean Ribbeck

RB, BV wheaten K by Larry Giberson

RV wheaten P by Larry Giberson

3 bantams were shown in the Junior Show and judged by Butch Gunderson

BV black H by Garrett McKee, **Junior Show Champion Ameraucana**

RV black H by Sarah Summerhill

BV wheaten H by Sam Meisnhelder



Garett McKee with his Award and his black bantam Ameraucana hen at the Pacific Northwest Poultry Association Northwest National

**Welcome to our  
New Members!**

- Deborah Abbott, NH
- Susanne Blumer, SC
- Jennifer Coleman, CA
- Bill Cook, NY
- Luanne D'Amico, FL
- Ajani Eagledove, NC
- Andrea Elste, Ontario
- Steven Holford, IL
- Scott, Kathy, Shay, Karsten Holly, AZ
- Luann, Alexis, Kari, RaeLee Keller, SC
- Julia Kurtz, PA
- Shau Landt, IA
- Stephanie Lesperance, MI
- Joseph Lewandowski, WV
- Jennifer Lopez, PA
- Cindy Martin, NC
- Ron and Sally McCarty, PA
- Briana Moore Family, AL
- Tricia Olvera, CA
- Cody Padilla, AZ
- Kathleen Pearl, MI
- Jennifer Lynn Scarborough, LA
- Meagan Timlake & Craig Tilbe, Andrew, Kerrigan Tilbe, NY
- Corrie Willis, Angela Selman and Family, MO
- Deb Yeagle, OH
- Preston and Ava Yerkes, TN

**Smith  
Ameraucana**

We will have a few breeder and layer Ameraucanas and SC Rhode Island Reds in September 2011.

We are accepting 2012 orders for large fowl day-old Ameraucana chicks in black, blue, splash, wheaten, blue wheaten, splash wheaten & large fowl day-old Single Comb Rhode Island Reds

**Hatching  
March through May  
2012**

Paul & Angela Smith  
2175 CR 224  
Gainesville, TX. 76240  
psmith@ntin.net  
940-768-8405



Limited numbers of 2011 hatch bantams in wheaten, blue wheaten, black, buff, and large fowl in brown red.

Will deliver to Indianapolis, the Wisconsin International, and the Michigan show at Birch Run.

Will ship when weather permits.

Mike Gilbert  
W5171 Baker Rd.  
Holmen, WI 54636;  
email:  
[info@redstagacres.com](mailto:info@redstagacres.com)  
phone (608) 857-3386  
before 9 pm central time



Featuring nest boxes with a 21st century design!

They'll be available thru your favorite poultry supply company any day now...and your chickens will love them!

For more information go to [FowlStuff.com](http://FowlStuff.com) or send a 1st class stamp to:

John W Blehm  
4599 Lange Road  
Birch Run MI 48415

**Ameraucana Breeders Club Board of Directors**

- President, Connie "Jean" Ribbeck**  
PO Box 461, Newman Lake, WA 99025 [jribbeck@g.com](mailto:jribbeck@g.com) (509-226-3833)
- Secretary/Treasurer, Michael Muenks**  
1222 Coldspring Road, Elgin, IL 60120 [michael@bantamhill.com](mailto:michael@bantamhill.com) (573)796-3999
- Director-North Central, Jerry De Smidt**  
N912 Hill Road, Pulaski, WI 54162 [jwoodhaven@aol.com](mailto:jwoodhaven@aol.com) (920)833-9772
- Director-Northeast, Harold Knapp**  
5299 Jerico Rd, East Bethany, NY 14054 [knapp@2ki.net](mailto:knapp@2ki.net) (585)343-0408
- Director-South Central, Paul Smith**  
2175 Country Road, Gainesville, TX 76240-0401 [psmith@ntin.net](mailto:psmith@ntin.net) (940)768-8405
- Director-Southeast, Tina Dinkins**  
309 Rogers Ridge Road, Kingston, TN 37763 [tinadinkins@comcast.net](mailto:tinadinkins@comcast.net) (865)376-4646
- Director-West, Jeanine McKee**  
1960 South Fir Street, Canby, OR 97013 [barterazia@hotmail.com](mailto:barterazia@hotmail.com) (503)953.0488